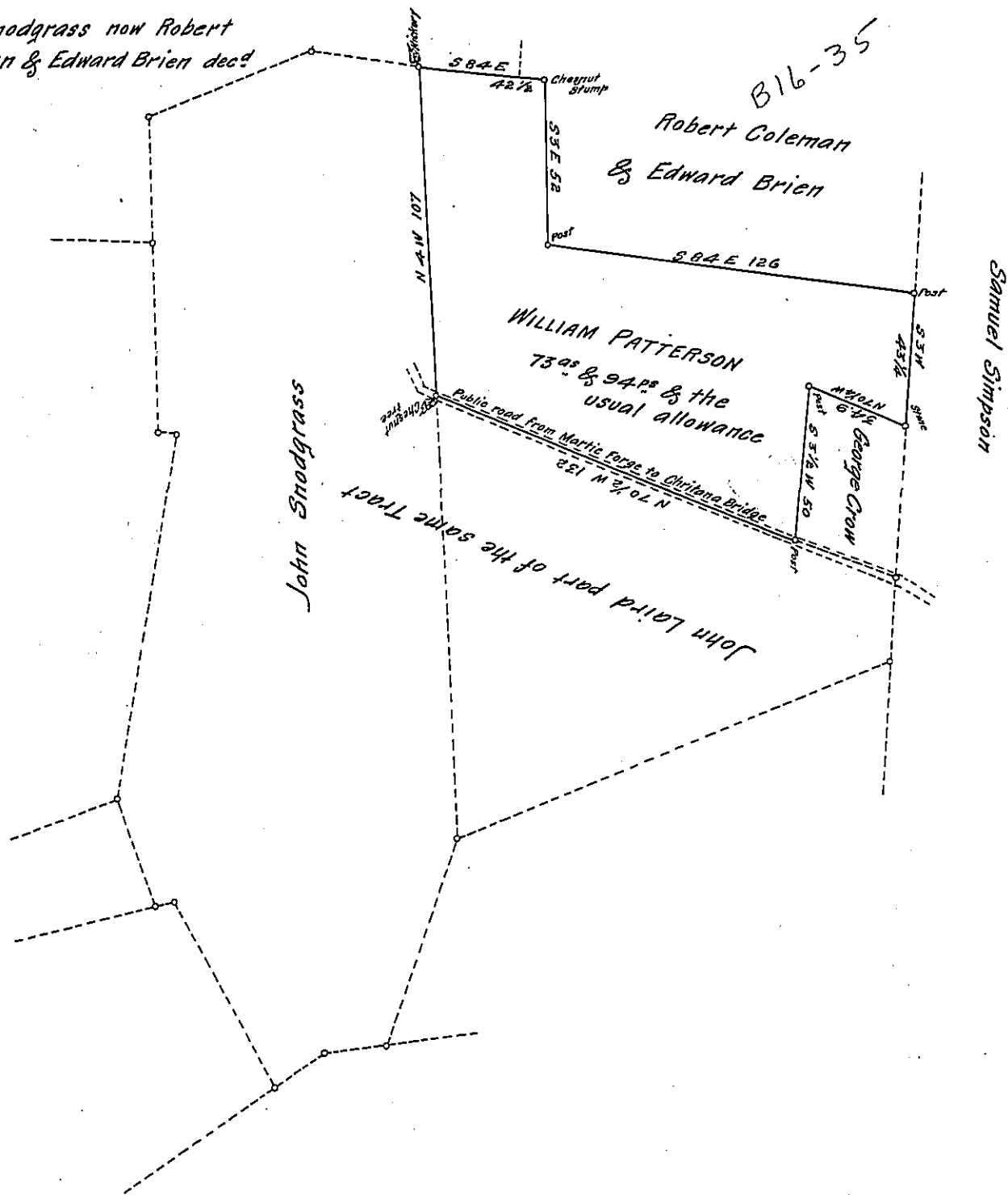


W^m Snodgrass now Robert
Coleman & Edward Brien dec^d



A Draught of a Tract of land situate in Martie Township Lancaster County containing Seventy three Acres and Ninety four perches & the usual allowance of Six $\frac{1}{2}$ cent for roads, Part of 328^{ac} & the allowance by Warrant dated the 20th of December 1750 granted to William Patterson, Surveyed the above described Tract of land the 29th May 1817 for Robert Coleman Esq^r & the Heirs of Edward Brien dec^d

Jacob Hibshman D.S.

To Samuel Cochran Esq^r }
Surveyor General }

I approve of the above Survey to be Accepted in
the Surveyor Generals Office 28th December 1822

Robt King Jr. D.S.

IN TESTIMONY that the above is a copy of the original remaining on file in the Department of Internal Affairs of Pennsylvania, made conformably to an Act of Assembly approved the 16th day of February, 1833, I have hereunto set my Hand and caused the Seal of said Department to be affixed at Harrisburg, this

eighteenth day of June 1907

Henry Howell
Secretary of Internal Affairs.